

The Voice

of the Clintonville Community Choir

February 2007 Edition

Spring Concert Rehearsal Schedule

February 7
February 14
February 21
March 7
March 14
March 21

No rehearsal on February 28.

**All rehearsals at 7:30pm,
Whetstone High School**

We invite new vocalists to join us—
invite a friend to one of the first
rehearsals to check us out!

Choir Newsletter

Welcome to the first edition of the Clintonville Community Choir Newsletter: *The Voice*. We hope to issue an edition at the beginning of the Spring and Fall seasons to share key information with current and returning choir members. If you have ideas, suggestions, or talents to lend to this effort, please contact Carol Bessey (263-4869). Carol is also looking for folks to help with other publicity efforts like printing flyers, posting flyers, and getting media coverage. All offers of assistance are appreciated!

Music Deposit

Do you want to take your music home to study it? That's great! But, if you do, you must make a \$10.00 music deposit to ensure the music's safe return to the music library. (Thus far, we have relied on music borrowed from the Whetstone High School's choral collection.)

The deposit is refunded when music is returned, provided the music is returned by the second rehearsal of the next concert season. If music is not returned by the due date, the deposit is forfeited.

Reminder: You can still collect your deposit for music from the Holiday Concert. Just return your music by the second rehearsal (February 14).

***Spring Concert
March 25
4:00 pm
Whetstone H.S.***

Membership and Attendance Policy

The Clintonville Community Choir is a very flexible organization. Still, we do offer a few rules of the road.

A person who wishes to join the choir should fill out a membership form, available from the Membership Director, June Niblick.

.....continued on page 2

The Voice

of the Clintonville Community Choir

February 2007 Edition

Membership Policy, continued...Active members are *encouraged* to pay membership dues of \$20 per concert season, or \$30 for a family of two. High school and college students are excluded from this provision. Membership dues help us pay for administrative expenses, publicity, and auditorium rental. In the future, fees also may be applied to the purchase of music folders and music.

To ensure a quality performance, as well as an enjoyable experience, members need to rehearse (of course!). If you are absent from four rehearsals, including one of the two final rehearsals before a performance, you may not be able to perform with us. Please discuss absences with Tom Maxwell, Choir Director. He may be willing to make exceptions to this policy.

We have a web site!

Thanks to Rich Humenick, we have our very own website. Check it out at:

www.clintonvillecommunitychoir.org

Choir Seeks Tax Exempt Status

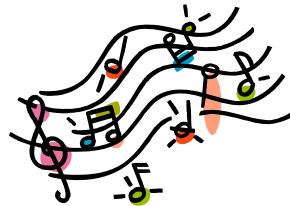
Tom Maxwell has been working toward the Clintonville Community Choir's official designation as a 501c3 tax exempt organization. This designation has several advantages: the Choir's earnings are free from income tax; our

purchases of materials are free from sales tax; and charitable contributions to the Choir are tax deductible to the donor.

While we do not yet have the official designation, once obtained, tax deductibility will apply retroactively to prior donations.

Fundraising

This Spring we will kick off a choir fundraising drive. Laura Messerly is seeking about 10 volunteers, each of whom would approach a business or two regarding sponsorship. Let her know if you can lend a hand, or have if you any ideas to support this effort.



Choir Officers

John Young, President
Donna Preissle, Secretary
Rich Humenick, Treasurer
June Niblick, Membership
Carol Bessey, Publicity
Diane Maxwell, Librarian
Laura Messerly, Fundraising
Tom Maxwell, Conductor
Sharon Watkins, Artistic Director.